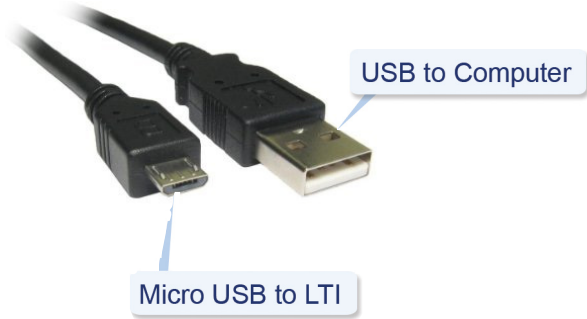


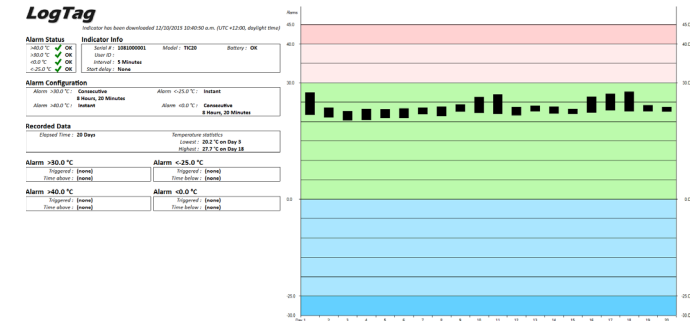
This Quickstart Guide covers preparation, use and analysis to assist you in easily downloading your TIC20 data and reviewing the results via the LogTag Indicator (LTI) Cradle.

## Step One: Connect LTI to your Computer



**Important:** Hold down the TIC20 firmly onto the LTI Cradle until the progress bar shown on LTA is complete and data is downloaded.

Whilst the data is downloading the Red LED on the LTI Cradle is illuminated. Continue applying firm downward pressure on to the TIC20 until download is completed.



### Alarm Status

>40.0 °C	✓	OK
>30.0 °C	✓	OK
<0.0 °C	✓	OK
<-25.0 °C	✓	OK

### Recorded Data

Elapsed Time : 20 Days

Temperature statistics

Lowest : 20.2 °C on Day 3

Highest : 27.7 °C on Day 18

## Step Two: Start LogTag Analyzer

When you start LogTag Analyzer (LTA), a Green LED on the LTI Cradle is illuminated to indicate the Cradle is powered and ready to download a LogTag device.

## Step Three: Insert TIC20 into LTI Cradle

Place the TIC20 face up into the cradle as shown and press the TIC20 down firmly so the contact pins pierce the label and enter the holes in the back of the product as seen in the following images.

## Step Four: Finishing the download

If the download was successful, a flashing Green LED will be displayed for a few seconds.

If the download was unsuccessful, a flashing Red LED will be displayed for a few seconds accompanied by an error shown on LTA.

You can now remove the TIC20 from the LTI Cradle.

### Troubleshooting:

If LTA is failing to download the TIC20 data, please clean the contact pins ensure no label pieces or sticky residue are on the contact pins.

LogTag Analyzer

File Edit LogTag Window Help

Day	Max. reading (°C)	Min. reading (°C)	Alarm : <-25.0°C	Time below :	Triggered
1	27.5	21.6			
2	23.5	21.0			
3	22.6	20.2			
4	23.3	20.3			
5	23.2	20.8			
6	23.4	20.8			
7	23.5	21.8			
8	23.8	21.3			
9	24.4	22.4			
10	26.3	22.2			
11	26.9	21.9			
12	23.7	21.5			
13	24.1	22.5			
14	23.8	22.0			
15	23.3	21.9			
16	26.4	22.3			
17	27.1	22.8			
18	27.7	22.5			
19	24.2	22.5			
20	23.7	22.4			

Elapsed Time 20 Days