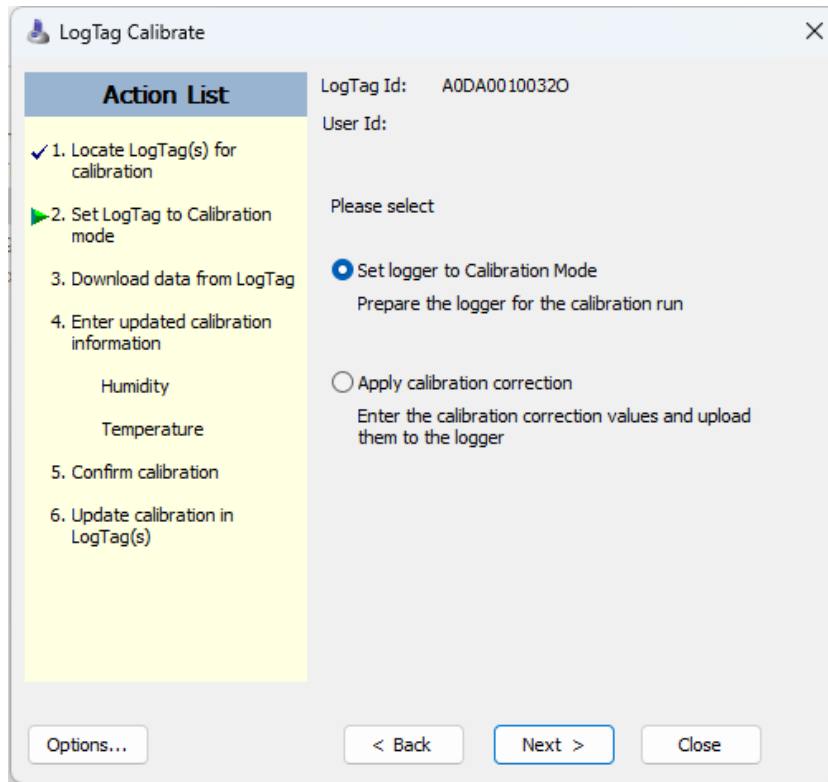
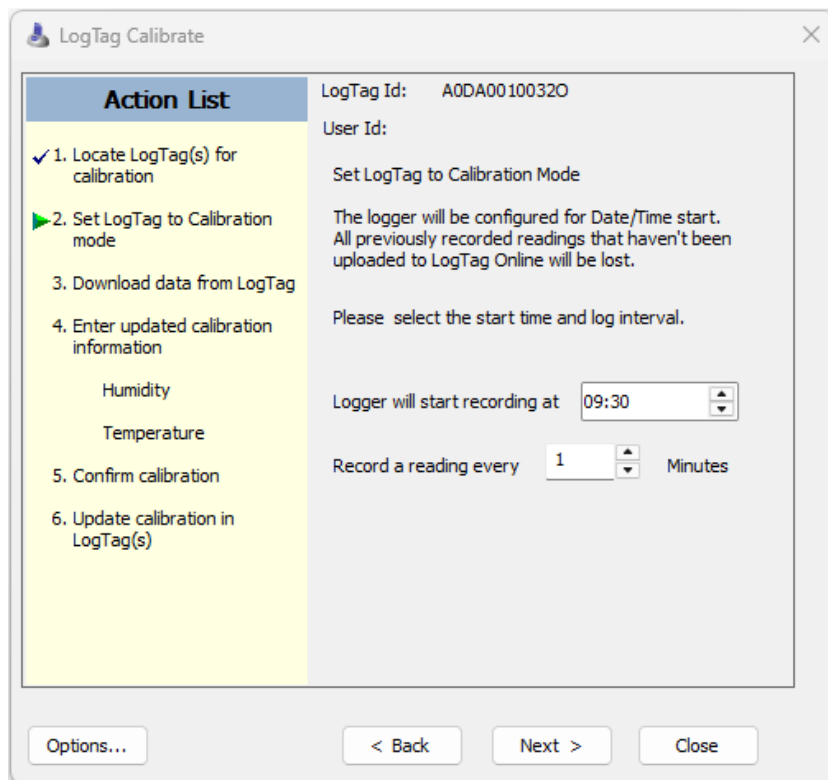


1. Connect LT5GEO to your PC, start LogTag Calibrate

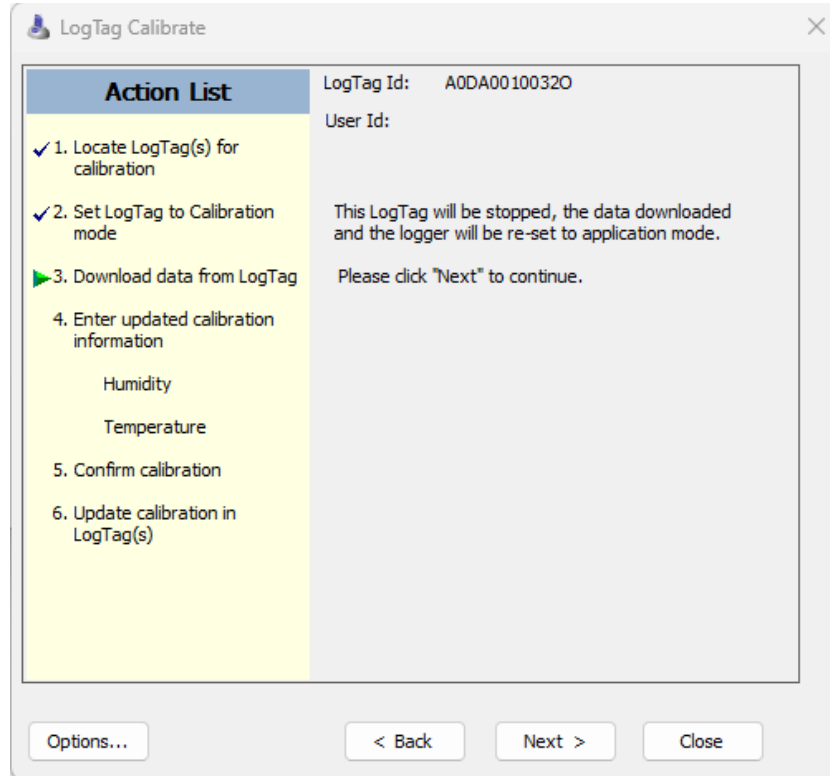


Select "Set logger to Calibration Mode"

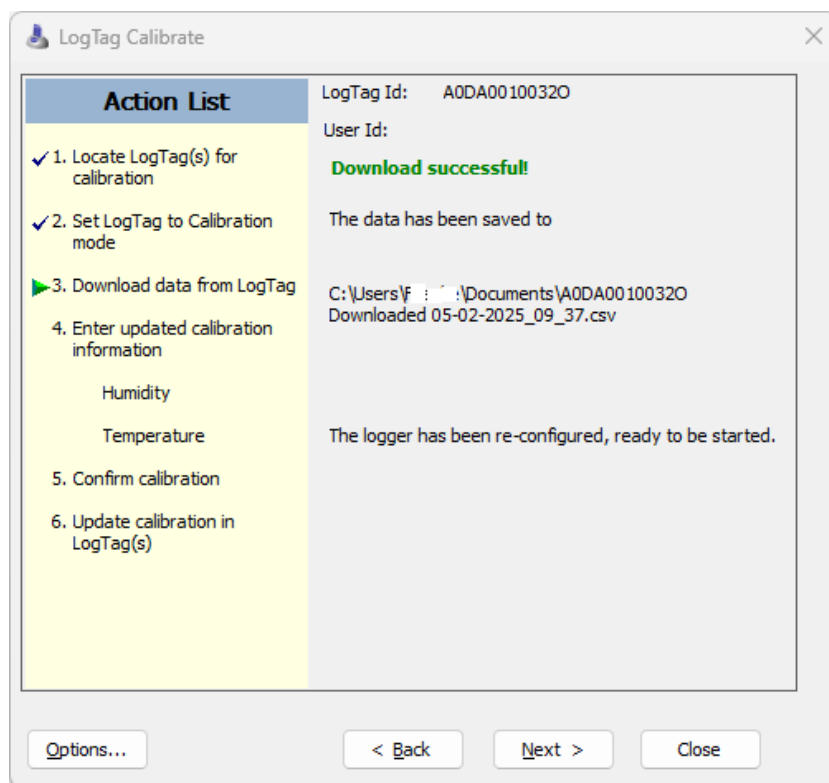
2. Enter logging parameters for the calibration run



- The logger is now in “Calibration Mode”, both LEDs should be flashing every 4 seconds. The logger is in “Airplane mode” and will not transmit data to LogTag Online. Place the logger into the calibration chamber.
- After the calibration run, connect the logger to the PC and start LogTag Calibrate:



The recorded data will be downloaded and stored in a .csv file in your “Documents” folder.



5. Clicking “Next” will advance to the humidity and temperature calibration adjustment screens.

LogTag Calibrate

LogTag Id: A0DA00100320
User Id:

Previous calibration:
Show installed setpoints

Leave humidity calibration unchanged
 Restore default calibration
 Use the following calibration values

	Reference reading (%RH)	LogTag recording (%RH)
1		
2		
3		

Temperature of readings: °C

Copy values Paste values

Options... < Back Next > Close

LogTag Calibrate

LogTag Id: A0DA00100320
User Id:

Previous calibration: 17/04/2024
Show previous values

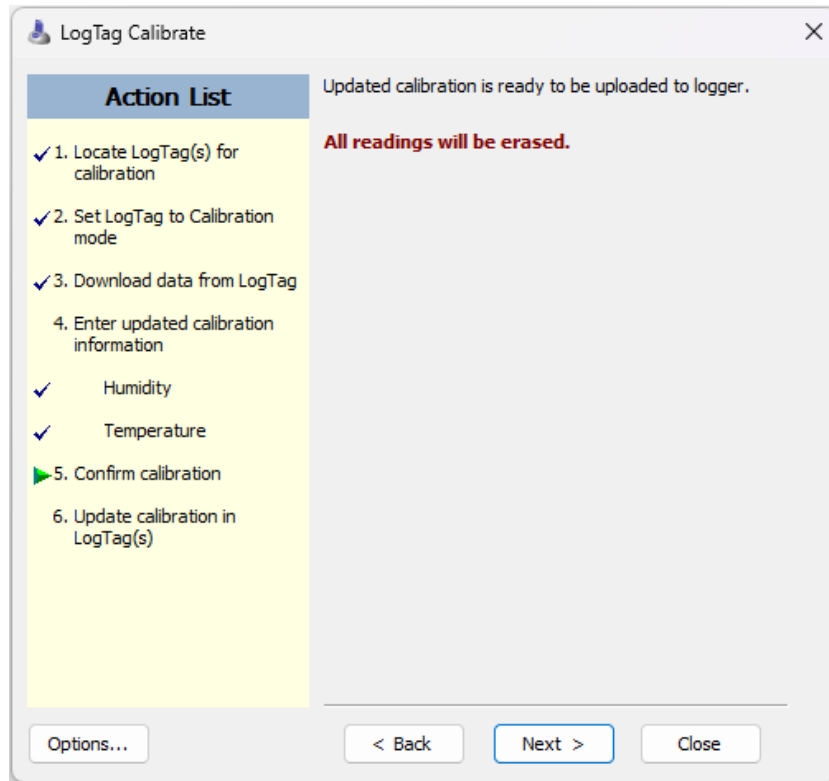
Leave temperature calibration unchanged
 Restore factory default calibration
 Use the following calibration values

°C

	Reference reading	LogTag reading
1		
2		
3		
4		
5		

Copy values Paste values

Options... < Back Next > Close



6. The entered calibration settings have been applied and the LT5GEO is now ready to be started again by pressing the Start button.

